

Member Satisfaction Surveys to be Emailed This Month



A&N Electric Cooperative will be conducting member satisfaction surveys during the month of March with the help of Cooperative Insights.

Surveys will have an online link embedded in the email message.

If you are one of the members who receives an email, please participate so we can find out how to better serve you and our other cooperative members.



*Daylight Saving
Time Reminder:
March 10, 2024*

CONTACT US

21275 Cooperative Way, P.O. Box 290
Tasley, VA 23441-0290

Phone
757-787-9750

Payments
855-386-9921

Website
anec.com



Office Hours
Monday-Friday, 7:30 a.m.-4:30 p.m.

President & CEO
Butch Williamson

Local Pages Editor
Jay Diem

*A&N Electric Cooperative is an
Equal Opportunity Provider and Employer.*



Upcoming Director Election 2024

A&N Electric Cooperative directors are elected from the membership to represent you on the board. The cooperative's bylaws govern the director election process and annual meeting. Director seats up for reelection this year are in District 1, District 2 and District 4.

- **District 1** (This district covers the northern areas of Accomack County from Parksley's northern border to the Virginia-Maryland state line and includes Tangier and Smith islands.)

- **District 2** (This district covers the area between Melfa and Parksley.)

- **District 4** (This district covers the area from Nassawadox's northern boundary to the Eastern Shore's southern tip.)

Those interested in running for a board seat can be nominated through the following methods:

(1) The Nominating Committee, representing the areas to elect directors, is appointed. The Nominating Committee will select a slate of candidates to be placed on the ballot at the cooperative's annual meeting. This year's Nominating Committee is scheduled to meet on May 9, 2024. Should you have a recommendation, you can submit your request in writing to the Nominating Committee prior to April 26, 2024, by sending a letter to the address listed below.

*Nominating Committee
A&N Electric Cooperative*

P.O. Box 290, Tasley, VA 23441

(2) Member Petition Nominations.

Members may nominate additional individuals to run for election for any director position for which Members are scheduled to vote at any Member meeting ("Member Petition Nominations"). Members may make Member Petition Nominations by delivering to the Secretary at least seventy-five (75) days prior to the Member meeting a writing for each Member Petition Nomination ("Member Petition").

After verifying that the Member Petition complies with this bylaw, the Cooperative shall post the Member Petition Nomination in approximately the same location as the Nominating Committee Nominations.

All nominations are due by April 26, 2024. No nominations shall be made from the floor at the annual member meeting. Please visit anec.com for the complete version of A&N Electric Cooperative's Bylaws to review director qualifications. Those interested in running for a board seat should email elections@anec.com.

APPLICATION

The Director Election Packet has a Director Application that must be completed and returned to the cooperative prior to the April 26 deadline. The packet also contains information regarding director elections and establishes a timeline for the process. The Director Application is used by the cooperative's independent Credentials and Election Committee to determine if a candidate is eligible to run for a seat on the board.



Cooperative Hosts Seedling Giveaway/ Member Appreciation Event April 27

A &N Electric Cooperative will host its annual Arbor Day and Member Appreciation event in April.

The cooperative will be giving away free seedlings and an assortment of shrubs to help celebrate Arbor Day, in addition to offering a number of demonstrations.

The event will take place on Saturday, April 27, and will be held at the Cooperative's Tasley headquarters.

The seedlings will be given away from 9 a.m. to 1 p.m., or while supplies last.

The free seedling giveaway is a portion of the Cooperative's right-of-way program that has achieved a Tree Line USA designation from the Arbor Day



Foundation for several consecutive years.

Tree Line USA, a partnership between the foundation and the National Association of State Foresters, recognizes public and private utilities for pursuing practices that protect and enhance America's urban trees. Tree Line USA promotes the dual goals of delivering safe and reliable electricity while maintaining healthy community forests.

Check anec.com and the cooperative's social media pages for more details.



Outage Notifications Available to Co-op SmartHub Users

A&N Electric Cooperative members have the option to sign up for outage notifications through SmartHub.

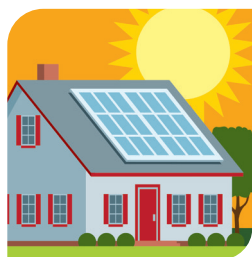
The notifications can be through email or text.

The current notifications available to members are that their power is out and that their power has been restored. Members have the option to sign up to receive one or both of the alerts.

To begin receiving the notifications a member will need an existing SmartHub account.

Once in the SmartHub menus they would need to register the phone number (for text alerts) or email address they would like to use to receive the alerts.

Step-by-step instructions are listed on the cooperative's website at anec.com under the "Outage Tools" section on the main menu.



Thinking About Residential Solar?

A&N Electric Cooperative has a web tool to help you estimate the cost of a residential solar installation.

The Residential Solar Tool Kit can be found on the

cooperative's website anec.com under the "Renewable Energy" tab.

Completing the residential solar assessment's short questionnaire will generate an estimate of your solar-generation potential, ongoing utility costs and estimated payback period for a rooftop solar system.

Before making a decision, please contact us. As your trusted energy provider, we can help you make smart energy investments.



anec.com/residential-solar-tool-kit

Dodd and Holland Earn Board Certifications

A&N Electric Cooperative Board Directors Ralph Dodd recently received his Director Gold credentials and Penney Holland received her Director Leadership Certification.



Ralph Dodd



Penney Holland

NRECA's Director Certificate Programs are specifically designed to help electric cooperative directors, at every stage of their service, understand their roles and responsibilities, stay up-to-date on the key issues and trends in the industry and prepare them to meet the challenges facing electric cooperatives now and in the future.

The educational programs recognize directors committed to continuing their education and who desire a tangible credential that demonstrates their ongoing commitment to advancing their knowledge and performing their fiduciary duty to the best of their ability.

Deadline Approaching for Applications



Electric cooperatives in Virginia, Maryland and Delaware are accepting applications for their scholarship program from high school seniors who intend to pursue higher-education studies.

The scholarships are awarded by the Virginia, Maryland & Delaware Association of Electric Cooperatives Education Scholarship Foundation.

The online application and additional information is posted at vmdaec.com/scholarship.

The application deadline is April 1.

Any high school or home-schooled senior graduating in spring 2024, and whose primary residence is served by an association member cooperative, is eligible to apply for a \$1,000 scholarship to be applied to a two- or four-year college or trade school.

A&N Electric Cooperative is a member of the association, making local students eligible to apply.

An applicant must be entering his or her first semester at a postsecondary or technical/trade school in the fall of 2024.

Scholarship funds, which will be sent directly to the educational institution, must be used toward tuition, student fees, room and board, or textbooks.

At least 30 scholarships have been awarded to local students served by A&N Electric Cooperative over the past eight years.

The Foundation's board of directors will select recipients based on these weighted criteria: financial need at 40%, academic achievement at 40% and personal statement at 20%. Applications are evaluated anonymously.

Award recipients will be notified no later than June 1.

Questions about donations and the application process should be directed to scholarship@vmdaec.com.

Communicating With Us?

Texting and webchat are available

TEXTING (GENERAL)

Texting is an option to reach a member services representative regarding any number of topics, excluding outage reporting (see below). Simply text a message to 757-787-9750 (the cooperative's main number) and the next available member services representative will reply.

TEXTING (OUTAGE)

Reporting an outage through text is now available to co-op members. Simply text OUT to 855-940-4016 to report your outage. The outage text option is in addition to reporting through our SmartHub app or by calling an outage into our main number. These three options are the only methods that will ensure the outage is properly logged into our outage-management system.

WEBCHAT

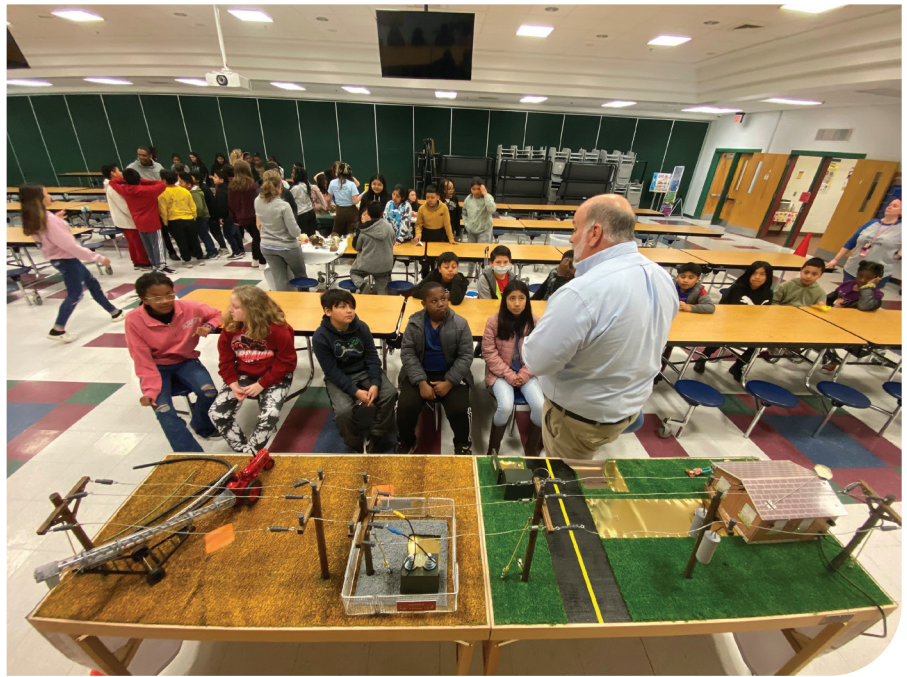
The new phone system also makes a webchat option available to co-op members. Log on to anec.com and select the "Chat with us. We are online!" box in the lower right of your screen.

This will create a dialog box. Just fill out the necessary information and hit "Chat."

Just like the text option, the webchat gives members the option to text chat directly with a member services representative.

With our new communication system, multiple forms of communication are funneled into one call queue, which will help streamline all the mediums our co-op members like to use.

General texting and webchat are available during the cooperative's regular business hours — 7:30 a.m.-4:30 p.m. Outage texting is available 24/7.



Co-op Offers Wide Variety of Demonstrations

Education and demonstrations are essential to providing service excellence to the communities and members we serve.

A&N Electric Cooperative offers a wide variety of presentations to schools, civic organizations and at community events.

A few examples include:

CAREER DAY

The Cooperative has a broad career base that includes linework, engineering, accounting, communications, construction, GIS, member services and more. Multiple career professionals may be available upon request.

HOT LINE DEMONSTRATION

A demonstration trailer with line segments demonstrates potential hazards associated with overhead power lines, tree limb contacts and fuse operation.

POWERTOWN ELECTRIC SAFETY DEMO

A scale-model neighborhood and agriculture scenes demonstrate potential hazards associated with electricity and electric facilities, such as ground transformers, overhead lines and substations.

UTILITY BUCKET PHOTO BOOTH

This demonstration includes a utility bucket and photo backdrop with a discussion of electric safety line gear. It offers a hands-on opportunity to try on a select set of electric safety gear. Photos are encouraged.

To see a complete list of demonstrations or to make a request, log onto anec.com/demonstrations-and-presentations and fill out the webform there. The "Demonstrations and Presentations" page under the "Community" tab on our home page lists the available presentations and offers a brief description of each.

In Like a Lion and Out Like a Lamb

by Mark Belknap | Director of Vegetation and Environmental Management

March is a month of transition. It's a time when winter still tries to cling on with its icy grip, yet the early flowers of spring begin to blossom. We spend our time perusing seed catalogs and preparing our gardens. We also start thinking about planting trees to beautify our homes and enhance wildlife and pollinator habitats.



Mark Belknap

In this month's highlight, we focus on "Right Tree, Right Place." We all recognize the numerous benefits of trees. Yet, as beneficial as they are, we must realize that not all species are suitable for every location. Have you ever seen a tree's roots destroy a sidewalk, road or foundation? The same holds true for tall-growing tree species and electric power lines. Conflicts between trees and power lines can cause outages or even wildfires, especially during major storms and wind events. Over the years, I've seen many instances where someone failed to look up when planting a tree. Many species can reach heights of 35-40 feet in just a few years. As trees grow in canopy height and width, so can the cost of maintaining our rights-of-way.

WHAT CAN YOU DO TO HELP?

When planning your spring planting, consider the species' growth potential. Reserve species that grow

taller than 20-25 feet for areas well outside the electric distribution right-of-way. Plant small shrubs in the wire zone and small trees on the edges. Keep trees, shrubs and ornamental grasses away from pad-mounted transformers. Remember to call Miss Utility before you dig to avoid underground wires. Following storms and wind events, always report and stay away from fallen wires until cooperative personnel arrive.

Looking for great recommendations? Join us at our annual Arbor Day/Member Appreciation Day at the A&N Tasley headquarters on April 27, rain or shine. You can see planting demonstrations, talk to an arborist, and pick up free seedlings, planting guides and more. Most of the species we choose are excellent for wildlife and pollinators, and many are shrubs and low-growing. We hope to see you there. And remember, always Look Up!

In next month's issue of Habitat Highlights, we will explore our right-of-way maintenance and its positive impacts on the American wild turkey.

Mark Belknap is the director of vegetation and environmental management at A&N Electric Cooperative. He has degrees in wildlife management and forest resource management from WVU. He is a wildlife biologist, certified arborist, certified arborist utility specialist, licensed professional forester, and habitat chair for the newly formed Coastal Virginia Chapter of Quail Forever.

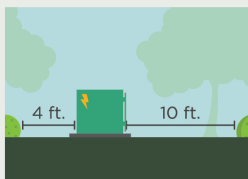
3 Ways to Help Limit Tree Trimming

Did you know electric utilities are required to trim trees and other types of vegetation that grow too close to overhead power lines? We know you love your trees, and we will do everything we can to avoid trimming them. Here's how you can help:

1. Plant trees in the right place. Trees that will be <40 ft. should be planted at least 25 ft. away from power lines (>40ft. should be at least 50 ft. away).



2. Don't block pad-mounted transformers. Plant shrubs at least 10 ft. away from transformer doors and 4 ft. from transformer sides.



3. Report dangerous branches. If you spot a tree or branch that is dangerously close to power lines, please let us know.



**Trimming improves safety for all.
Let's work together to enjoy the beauty of trees and reliable electricity.**



Santa Visit

The Onancock Rotary Club organized a surprise visit from Santa Claus for the members of the Eastern Shore Community Services Board day program in December. A&N Electric Cooperative was able to help with the visit by bringing in Santa in one of the co-op's bucket trucks. St. Nick then passed out goodie bags filled with items donated by local businesses before wishing everyone a Merry Christmas and heading back to the North Pole.



Energy-Efficiency Tip of the Month

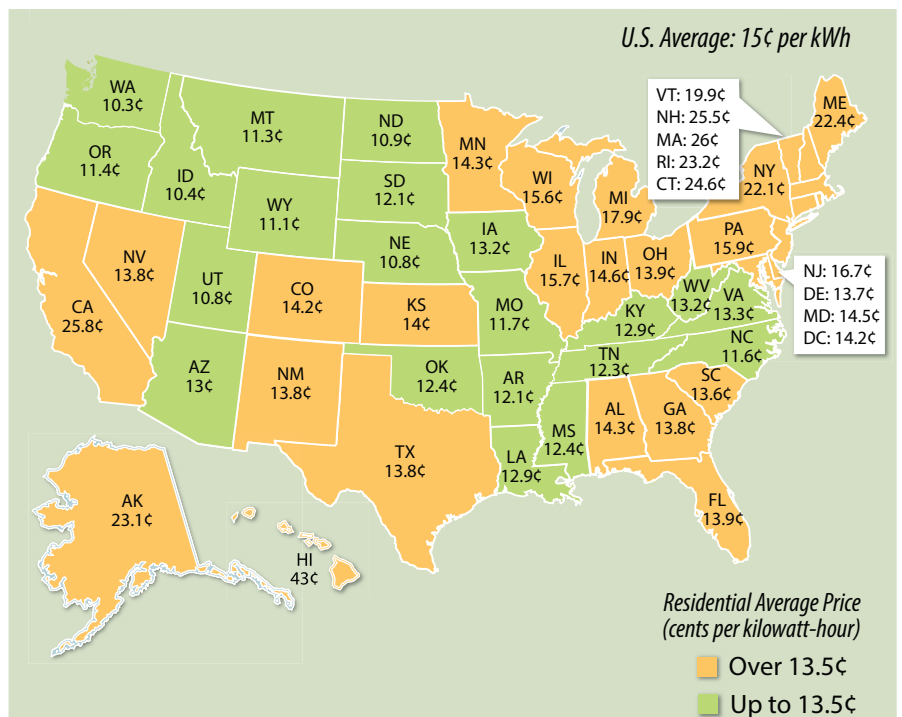
Lengthen the life of your clothes dryer with regular cleaning. Clean the lint filter after every load, which improves air circulation and safety. Check the lint trap opening to ensure it's clean. Use a vacuum to remove any lint that's fallen inside the opening.

If you use dryer sheets, check the lint filter for residue buildup. Remove any residue with hot water and a nylon brush or toothbrush. Over time, dryer sheets can leave a film on the filter, which can affect the performance of the motor.

Source: [energystar.gov](https://www.energystar.gov)

Average Prices for Residential Electricity

2022 figures, in cents per kWh



Source: U.S. Energy Information Administration
Numbers rounded to nearest tenth of a cent